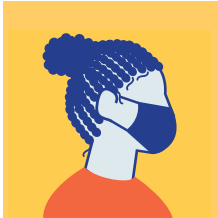


HOW TO STAY SAFER ON YOUR RIDE

UF Vehicle Use Policy

Thank you for your cooperation!



WEAR A FACE COVERING

- Limit vehicle occupancy, when possible, to one person.
- If multiple occupants, all should wear masks.
- Turn AC to non-circulating.
- Open windows if possible.



CLEAN THE VEHICLE AFTER USE

- Remove dirt and debris first so disinfectant will be effective.
- Use disinfectant wipes or spray and disposable towels to disinfect high touch-points (steering wheels, door handle, etc.).
- Sanitize all keys and key rings prior to return.

This sign must be displayed within the vehicle.

Learn more at [Coronavirus.UFHealth.org](https://www.covid19.ufl.edu)